

Using assessment systems for benchmarking and lessons learned

EuroSPI Conference

Mary Roselind Michael, Assessment Manager, Aug 2023



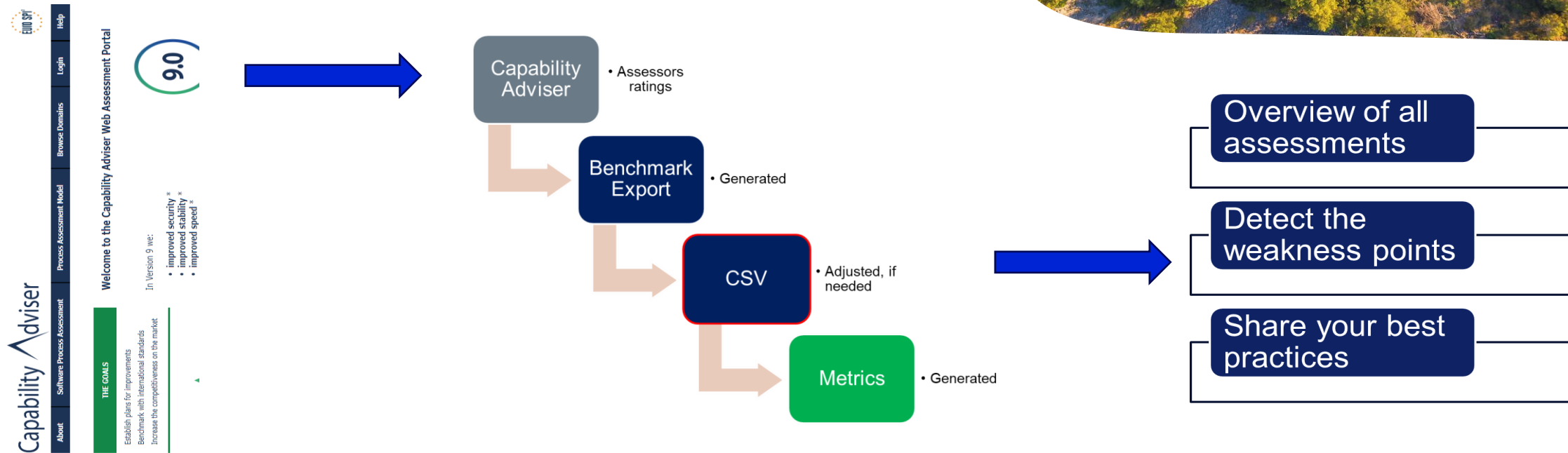
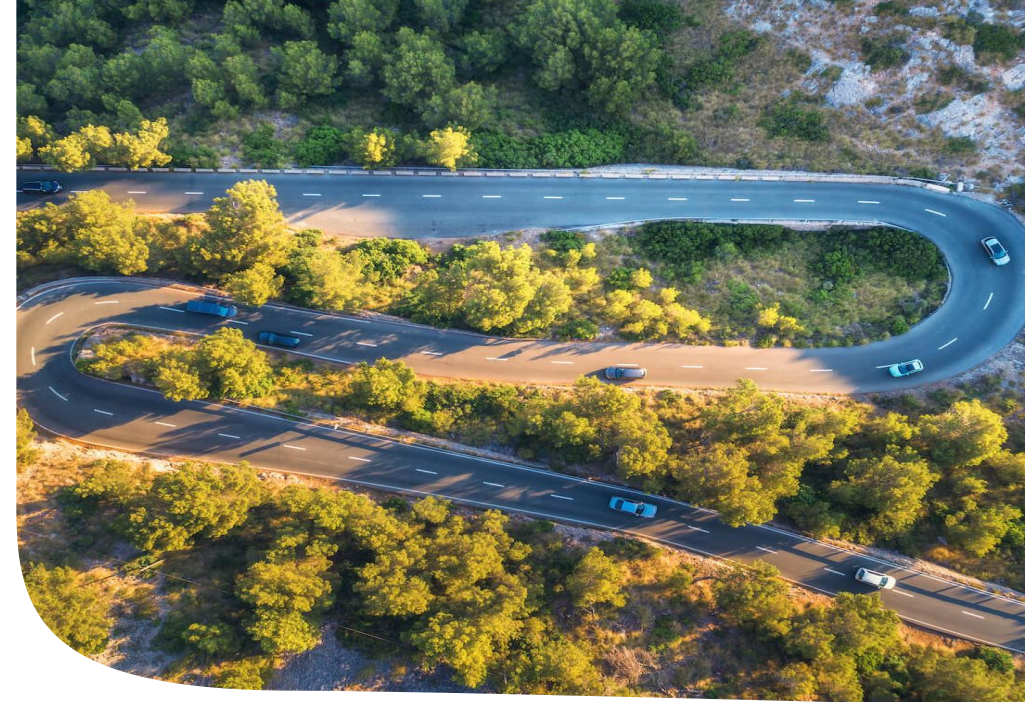
Summary

01 **Assessment Strategy & Assessment results**

02 **Lessons Learned & Improvement projects**

ASPICE assessment strategy

- › Yearly assessment program covering all product centres & locations
- › Pool of certified lead and co-assessors exists, are allocated based on category of independence
- › Infrastructure enables to establish the assessment strategy & improvement projects



Process: BMM-50-30-05 Conduct ASPICE assessments in Signavio tool

Benchmarking of Assessment Data

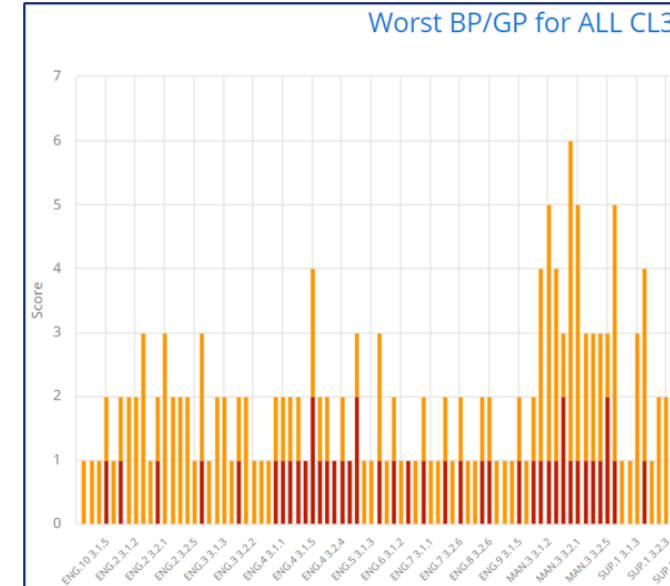
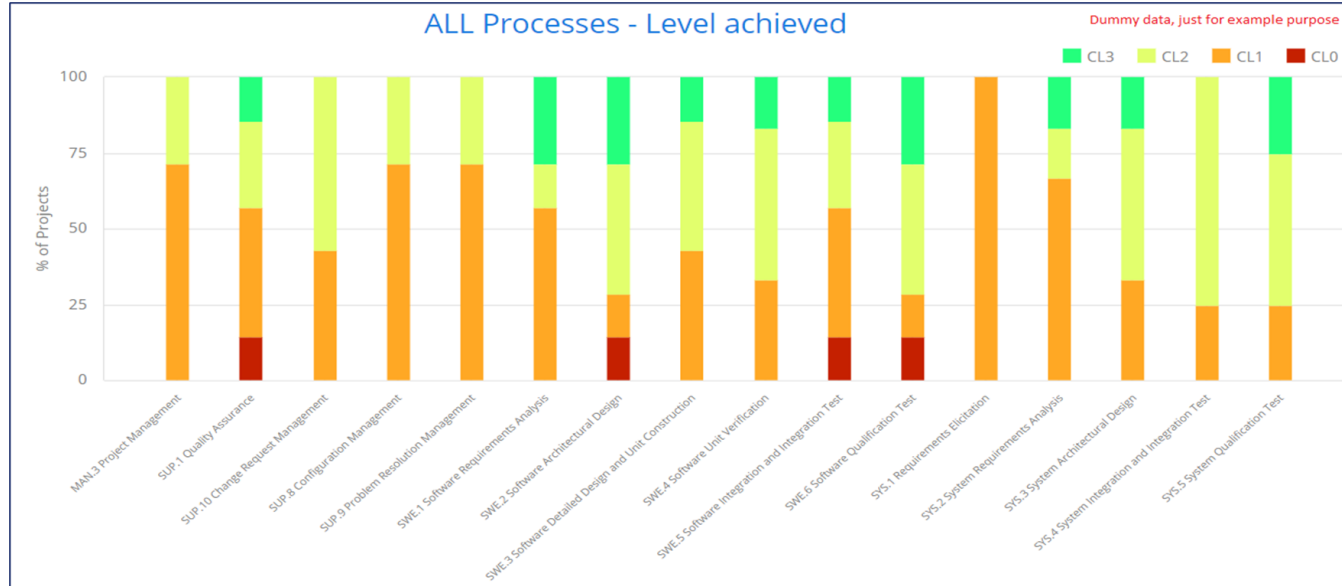
Capability advisor tool export & utilisation

Inputs:

- In the capability advisor tool, the process scope, target level etc can be defined for each project assessment
- Multiple std and customized fields are available in the tool

Utilisation:

- Publish the data internally; allows user-friendly filters/views/charts
- Allows to access the best practices & weaknesses



[Halma metrics: dc2halma11v.dc.hella.com/halma/#!metrics/metrics/chart=1121&project=6981&release=](https://dc2halma11v.dc.hella.com/halma/#!metrics/metrics/chart=1121&project=6981&release=)

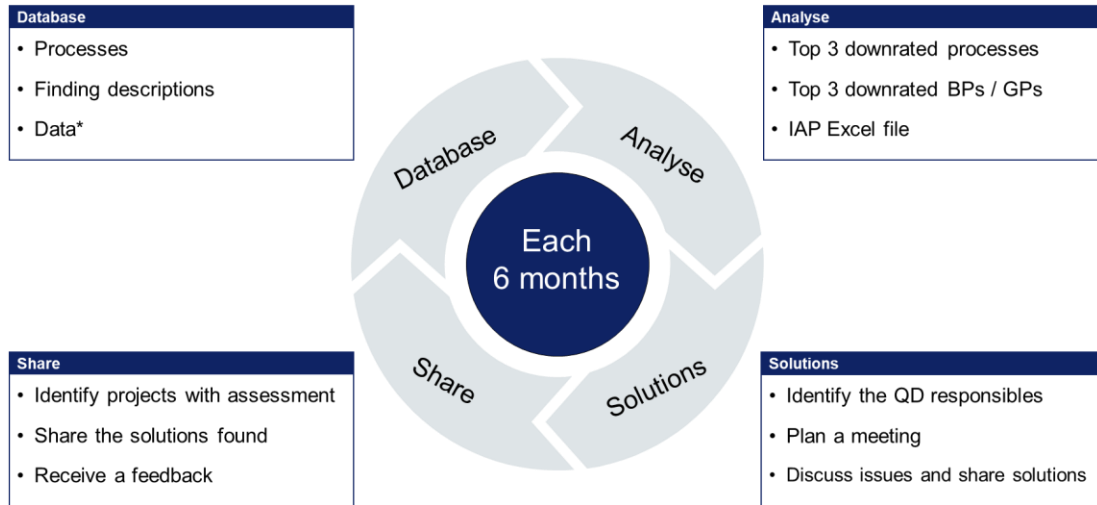


01

Lessons Learned & Improvements

Improvement actions

Immediate Action Plan (IAP) & Long-term improvement projects



Example communication with the project:

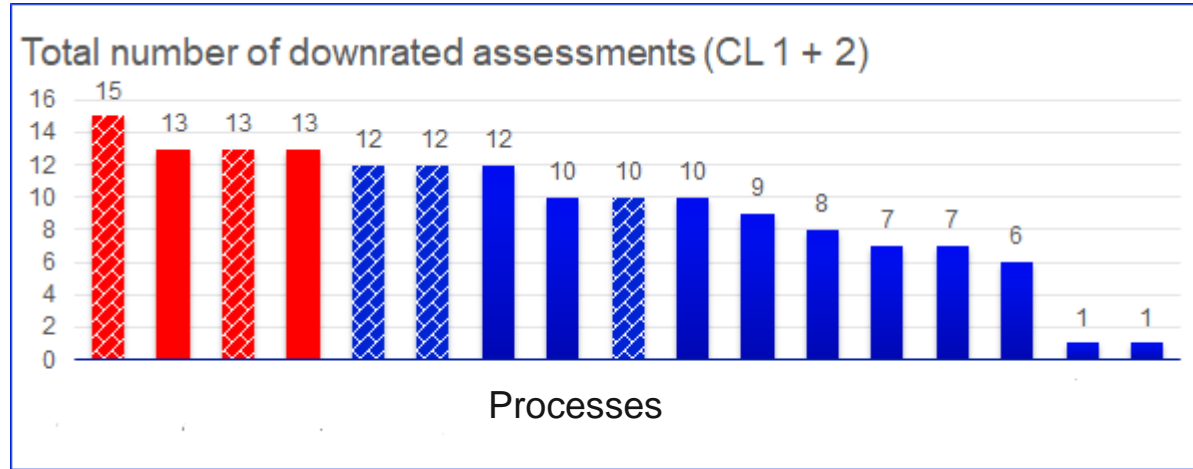
				Update only this column	
Completeness level	This file is updated completely if the total of NYA (li			Solutions progress	TOTAL
25,15%				30,67%	
SYS.4.BP6 Perform system integration test					
No. #	Assessed project	QD SW responsib	Issue description	Solution from already assessed projects	Usefull information for your Project?
9	22-21 TI_PSA_BLDC_IFCM	Marius Stan	(+) For Release 6 the very few system integration test cases are executed (1 failed). (-) Low coverage, no testing of HSI.	Task was planned and the owner works to close it.	NA
SYS.4.BP8 Ensure consistency					
8	22-21 TI_PSA_BLDC_IFCM	Marius Stan	(-) No review executed covering consistency for all system interfaces.	Consistency mentained with Review Master 1629626, task closed.	NYA
SYS.4.2.1.4 Adjust the performance of the process					
7	22-21 TI_PSA_BLDC_IFCM	Marius Stan	(-) No adjustment possible - see GP2.1.2.	Task is covered by TI Automotive System Test and System Integration Test Schedule.mpp and Release-Plan_Customer.xlsm	NYA

Summary:

- Project team & other stakeholders involve in the immediate action plan (IAP) led by Quality
 - Identifies the common critical findings like BP x, BP y, GP x.y.z of top downrated processes.
 - Similar analysis is performed separately for for e.g. test processes, Level 2 results, level 3 results
 - Evaluates the effictevness of IAP periodically

Improvement actions

Immediate Action Plan (IAP) & Long-term improvement projects



Summary:

- Based on the data analysis, triggers the departments about critical processes
- Development management has a defined team at product centres to drive long term actions
- Derive & closely monitor the measures taken to eradicate the top critical findings in those weakest processes
 - defines those as interim targets

FORVIA



We are @ [Automotive SPICE Assessment Management \(sharepoint.com\)](#)